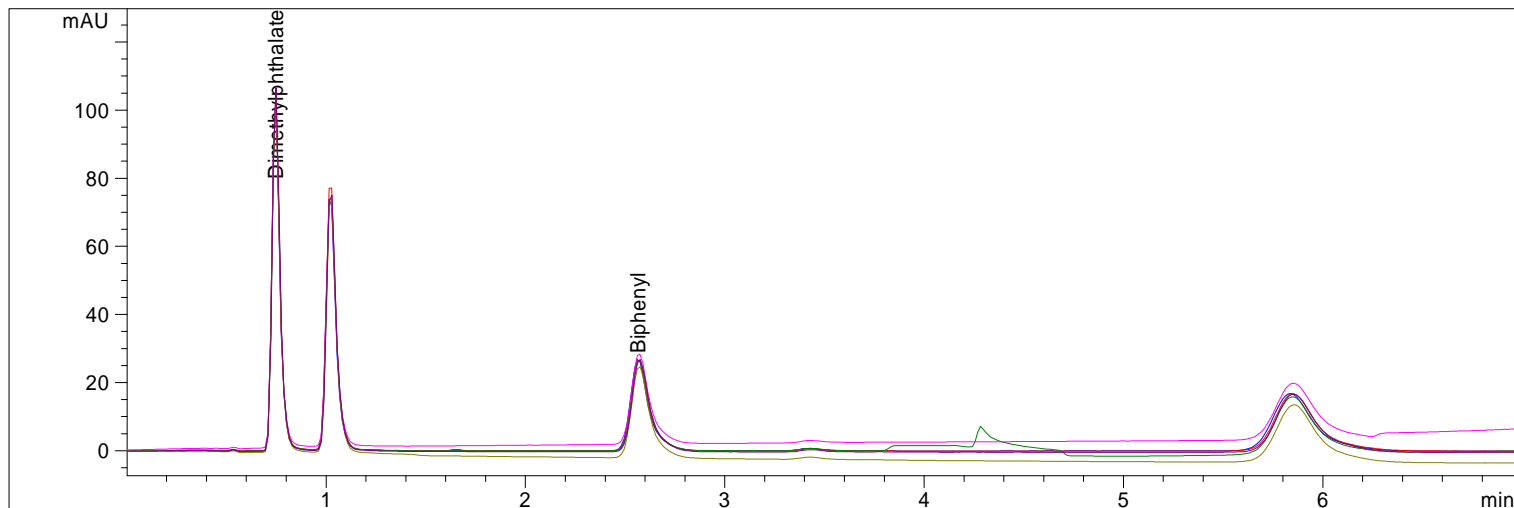


Report Set **www.waleson.eu**
 Operator ?
 Report Time 2007-12-12 22:55
 Data Path C:\CHEM32\2\DATA\DEMO\
 Method BATCH.M

Inj#	DataFile	Vial	Sample	InjTime	Instrument	Operator	Method
1	005-0101.D	Vial 5	Isocratic Std. 1	4/19/94 7:44:14 AM	HP LC 1050	a.g.h.	DEMO.M
2	005-0102.D	Vial 5	Isocratic Std. 1	4/19/94 7:52:24 AM	HP LC 1050	a.g.h.	DEMO.M
3	005-0103.D	Vial 5	Isocratic Std. 1	4/19/94 8:00:34 AM	HP LC 1050	a.g.h.	DEMO.M
4	005-0104.D	Vial 5	Isocratic Std. 1	4/19/94 8:08:45 AM	HP LC 1050	a.g.h.	DEMO.M
5	005-0105.D	Vial 5	Isocratic Std. 1	4/19/94 8:16:54 AM	HP LC 1050	a.g.h.	DEMO.M
6	005-0106.D	Vial 5	Isocratic Std. 1	4/19/94 8:25:02 AM	HP LC 1050	a.g.h.	DEMO.M



Dimethylphthalate

Tailing	Resolution	Plates	SigNoise	Area	RT	Amount	Sample	Inj#
1.106		1032	1701.7	294.5	0.747	0.089	Isocratic Std. 1	1
1.102		1027	2306.9	300.1	0.747	0.091	Isocratic Std. 1	2
1.100		1014	2834.2	296.8	0.748	0.090	Isocratic Std. 1	3
1.107		1009	1770.8	294.7	0.747	0.089	Isocratic Std. 1	4
1.095		1011	2561.6	297.7	0.747	0.090	Isocratic Std. 1	5
1.095		1024	1996.0	300.3	0.748	0.091	Isocratic Std. 1	6
1.101		1020	2195.2	297.4	0.747	0.090	Mean	
0.47		0.93	20.56	0.85	0.07	0.85	%RSD	

Biphenyl

Tailing	Resolution	Plates	SigNoise	Area	RT	Amount	Sample	Inj#
1.525	11.931	2008	114.5	176.1	2.565	0.006	Isocratic Std. 1	1
1.517	11.903	1985	147.7	176.7	2.569	0.006	Isocratic Std. 1	2
1.523	11.907	2005	135.5	176.5	2.570	0.006	Isocratic Std. 1	3
1.539	11.943	1960	143.4	175.6	2.570	0.006	Isocratic Std. 1	4
1.487	11.804	2072	228.7	177.2	2.571	0.006	Isocratic Std. 1	5
1.519	11.893	2005	142.1	179.3	2.573	0.006	Isocratic Std. 1	6
1.518	11.897	2006	152.0	176.9	2.570	0.006	Mean	
1.13	0.41	1.85	25.91	0.74	0.10	0.74	%RSD	

[Uncalibrated Peaks]

Tailing	Resolution	Plates	SigNoise	Area	RT	Amount	Sample	Inj#
1.210	3.022	1395	203.3	260.3	1.021		Isocratic Std. 1	1
1.465	12.594	2077	347.2	250.7	5.837		Isocratic Std. 1	1
1.206	3.021	1393	400.0	276.2	1.022		Isocratic Std. 1	2
1.487	12.622	2040	337.6	252.2	5.849		Isocratic Std. 1	2
1.214	3.004	1367	375.1	264.7	1.023		Isocratic Std. 1	3
1.666	12.507	1788	446.3	253.1	5.849		Isocratic Std. 1	3
1.217	3.023	1361	385.8	261.5	1.022		Isocratic Std. 1	4
1.563	12.748	900	136.8	229.2	5.852		Isocratic Std. 1	4
1.197	3.011	1416	388.1	264.0	1.023		Isocratic Std. 1	5
1.424	12.586	2089	446.8	252.8	5.856		Isocratic Std. 1	5
1.197	2.990	1408	396.7	266.7	1.024		Isocratic Std. 1	6
1.452	12.629	2056	333.4	255.6	5.854		Isocratic Std. 1	6