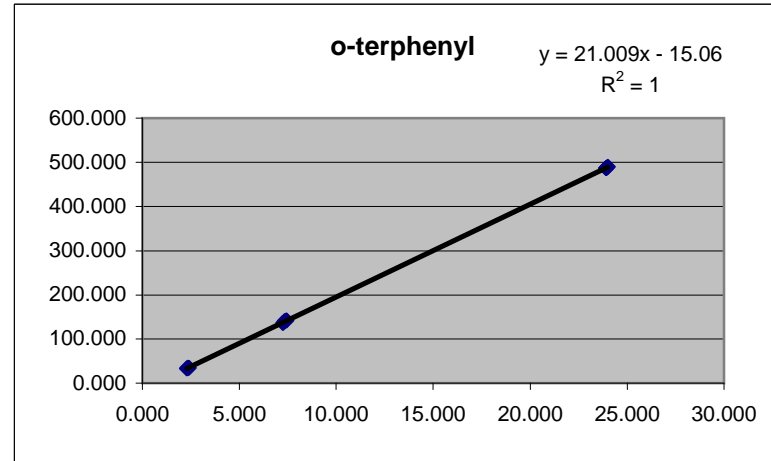
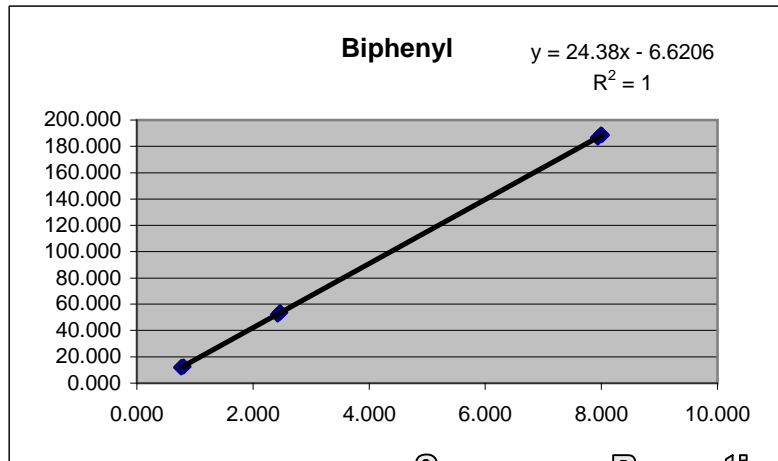


Type	File	Injection	Position	Sample Name	Amount		RT		Area	
					Biphenyl	o-terphenyl	Biphenyl	o-terphenyl	Known	Unknown
Sample	004-0701.D	2006/03/15 17:19	Vial 004	Isocratic Sample	1.826	5.189	2.008	3.403	223.0	423.0
Sample	004-0702.D	2006/03/15 17:24	Vial 004	Isocratic Sample	1.731	5.293	2.006	3.395	223.0	417.7
Sample	004-0703.D	2006/03/15 17:45	Vial 004	Isocratic Sample	1.723	5.350	2.010	3.401	225.7	419.4
Sample	004-0704.D	2006/03/15 17:51	Vial 004	Isocratic Sample	1.775	5.330	2.005	3.396	227.2	420.5

Sequence Reporting
Evaluation demo www.waleson.eu

Type	File	Injection	Position	Sample Name	Amount		Area		RT	
					Biphenyl	o-terphenyl	Biphenyl	o-terphenyl	Biphenyl	o-terphenyl
Calibration	001-0101.D	2006/03/15 16:47	Vial 001	Low Standard	0.761	2.287	12.026	33.314	1.978	3.332
Calibration	002-0201.D	2006/03/15 16:52	Vial 002	Medium Standard	2.423	7.257	52.078	136.321	1.971	3.338
Calibration	003-0301.D	2006/03/15 16:57	Vial 003	High Standard	7.996	23.990	188.956	489.700	2.002	3.391
Calibration	C4-07001.D	2006/03/15 17:03	Vial 001	Low Standard	0.805	2.400	12.705	34.395	2.004	3.401
Calibration	C5-07001.D	2006/03/15 17:08	Vial 002	Medium Standard	2.463	7.438	53.642	141.675	2.007	3.404
Calibration	C6-07001.D	2006/03/15 17:13	Vial 003	High Standard	7.942	23.915	186.551	487.250	2.010	3.405
Calibration	C4-07002.D	2006/03/15 17:29	Vial 001	Low Standard	0.772	2.343	12.401	34.801	2.005	3.403
Calibration	C5-07002.D	2006/03/15 17:35	Vial 002	Medium Standard	2.469	7.361	53.737	140.189	2.004	3.400
Calibration	C6-07002.D	2006/03/15 17:40	Vial 003	High Standard	8.010	23.920	188.479	486.847	2.008	3.406
RSD%									0.8290348	0.966448



Sequence Reporting

Evaluation demo www.waleson.eu

Sequence

CLASSEQUENCE.S

C:\CHEM32\2\DATA\CLASSEQUENCE 2006-03-15 10-46-09\

Sample	Low Standard	Medium Standard	High Standard	Low Standard	Medium Standard	High Standard	Isocratic Sample	Isocratic Sample	Low Standard	Medium Standard	High Standard	Isocratic Sample	Isocratic Sample
Biphenyl													
RT	1.98	1.97	2.00	2.00	2.01	2.01	2.01	2.01	2.00	2.00	2.01	2.01	2.00
Area	12.03	52.08	188.96	12.70	53.64	186.55	38.01	35.70	12.40	53.74	188.48	35.64	36.89
Height	3.83	16.21	57.44	3.79	16.15	57.15	11.31	11.08	3.81	16.16	57.51	11.03	11.16
Width	0.05	0.05	0.05	0.05	0.05	0.05	0.05	0.05	0.05	0.05	0.05	0.05	0.05
Symmetry	1.01	1.00	0.98	0.99	0.99	0.99	0.96	0.99	0.98	0.98	1.00	1.01	1.01
Amount	0.76	2.42	8.00	0.80	2.46	7.94	1.83	1.73	0.77	2.47	8.01	1.72	1.77
o-terphenyl													
RT	3.33	3.34	3.39	3.40	3.40	3.41	3.40	3.39	3.40	3.40	3.41	3.40	3.40
Area	33.31	136.32	489.70	34.40	141.67	487.25	94.31	96.50	34.80	140.19	486.85	98.01	97.58
Height	6.13	24.91	87.69	5.86	24.85	87.66	17.19	17.26	5.88	24.87	86.65	17.37	17.21
Width	0.08	0.08	0.09	0.09	0.09	0.09	0.09	0.09	0.09	0.09	0.09	0.09	0.09
Symmetry	1.03	1.05	1.05	1.17	1.06	1.04	1.04	1.04	1.07	1.06	1.06	1.05	1.05
Amount	2.29	7.26	23.99	2.40	7.44	23.92	5.19	5.29	2.34	7.36	23.92	5.35	5.33

Sequence Reporting
 Evaluation demo www.waleson.eu

Signatures

LogonName	Time	ComputerName	UserFullName	Comment
-----------	------	--------------	--------------	---------

Sequence Reporting
Evaluation demo www.waleson.eu