

File: C:\MSDCHEM\msdemo\rfgdata\std_b3.d

Sample: Set B Mix 3

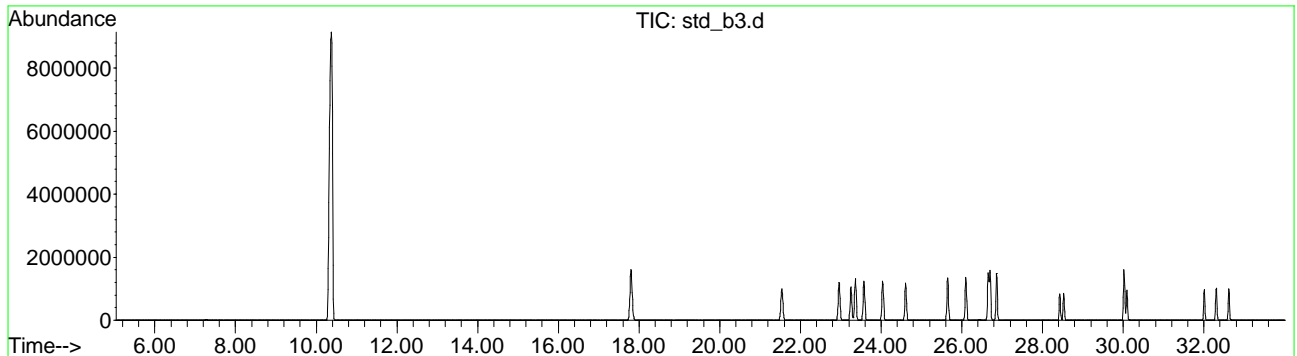
Misc.:

Operator: HPDemo

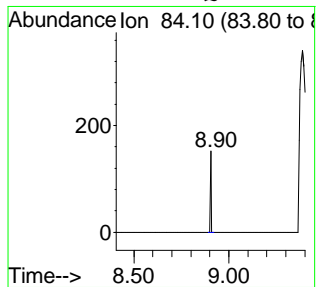
Date: 12 Aug 1995 16:54

Method: YYY.M

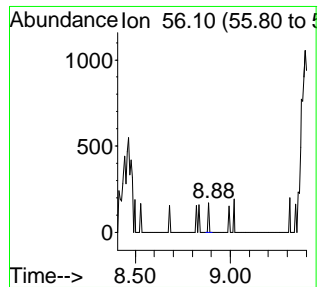
Vial: 8



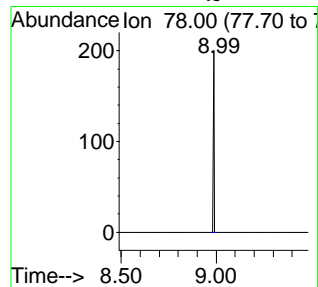
benzene-d6
A 58 Q 1



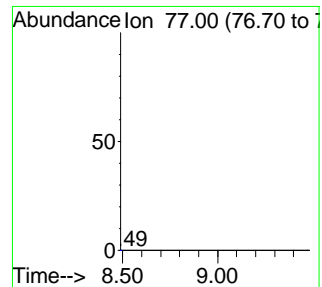
Q1
A 65



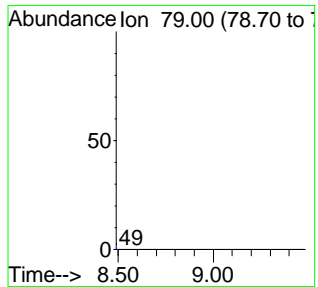
benzene
A 77 Q 58



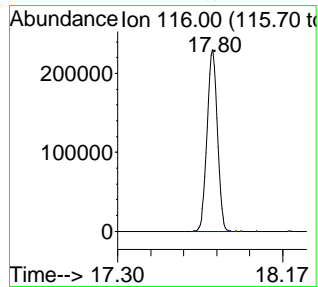
Q1
A 0



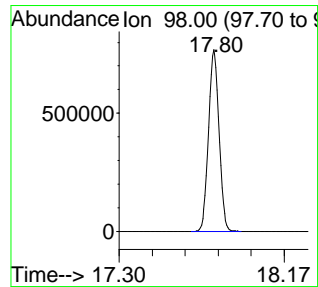
Q2
A 0



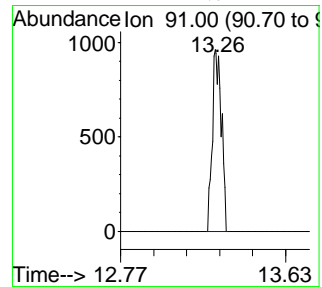
ethylbenzene-d10
A 870439 Q 90



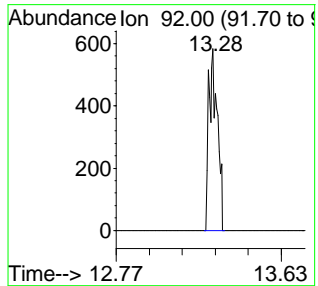
Q1
A 2968850



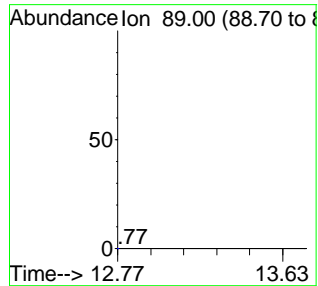
Toluene
A 3204 Q 94



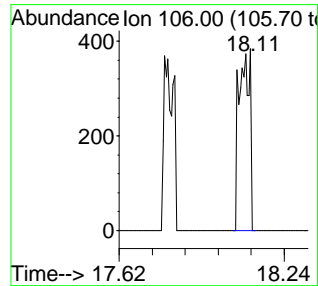
Q1
A 1836



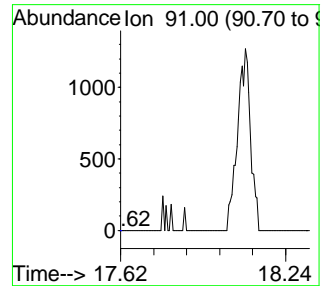
Q2
A 0



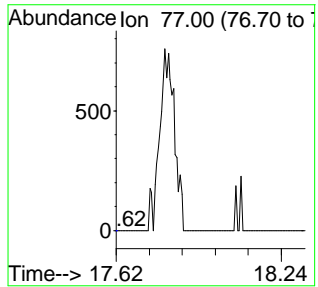
ethylbenzene
A 1111 Q 1



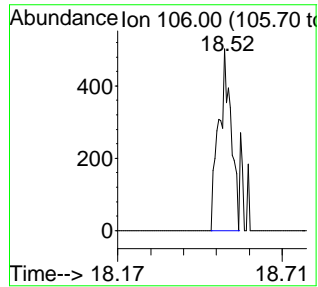
Q1
A 0



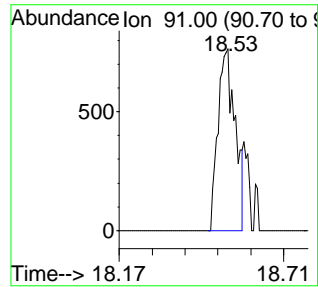
Q2
A 0



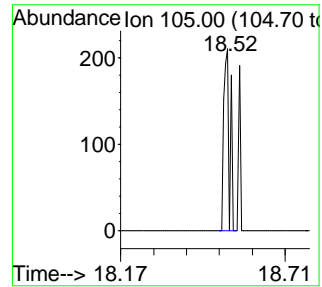
m&p xylene
A 1410 Q 78



Q1
A 2984

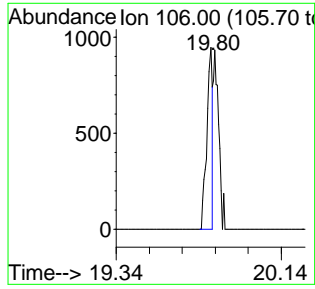


Q2
A 281



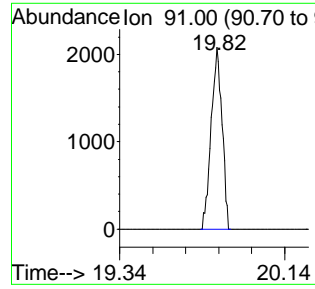
o-xylene

A 1613 Q 1



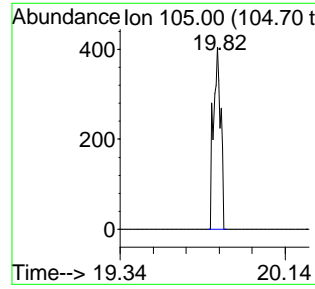
Q1

A 7523



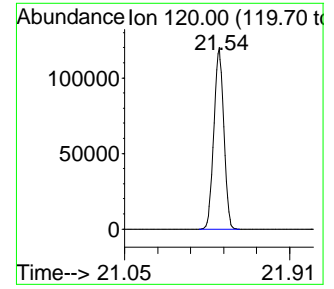
Q2

A 961



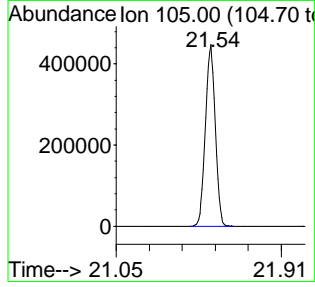
1-methylethylben

A 437043 Q 95



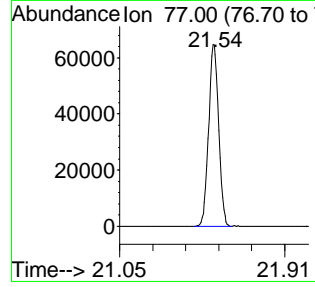
Q1

A 1620104



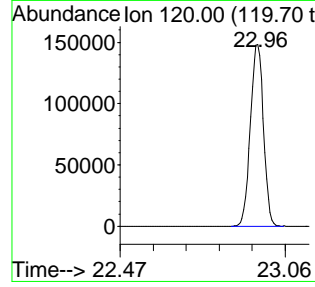
Q2

A 237697



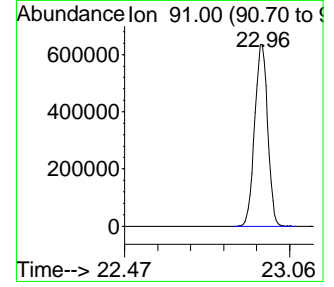
n-propylbenzene

A 486755 Q 87



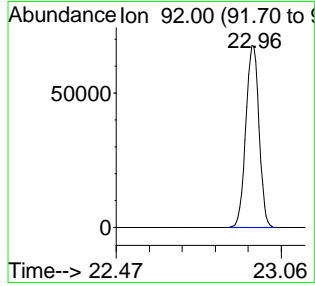
Q1

A 2076234



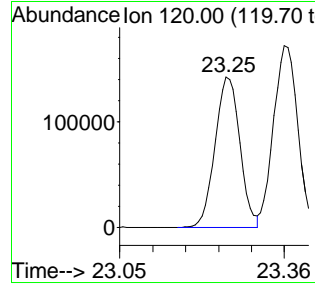
Q2

A 223637



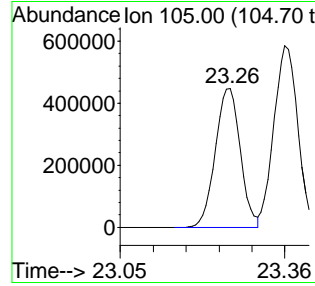
1-methyl-3-ethyl

A 456168 Q 91



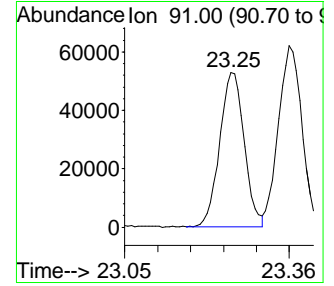
Q1

A 1438177



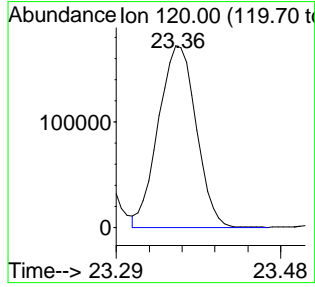
Q2

A 166171



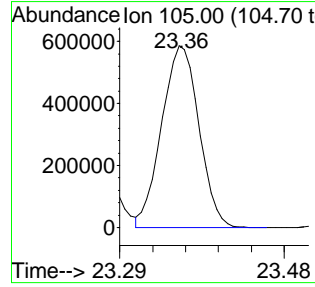
1-methyl-4-ethyl

A 533593 Q 91



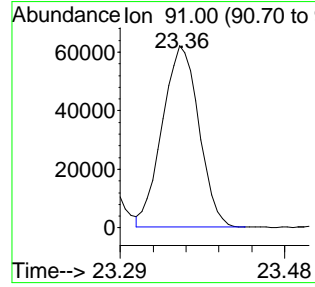
Q1

A 1787409



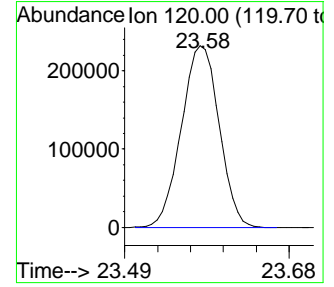
Q2

A 186135



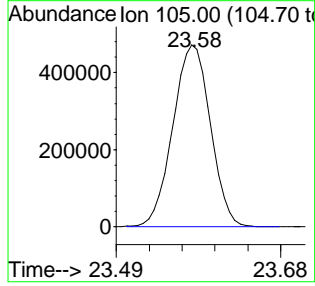
1,3,5-trimethylb

A 718894 Q 90



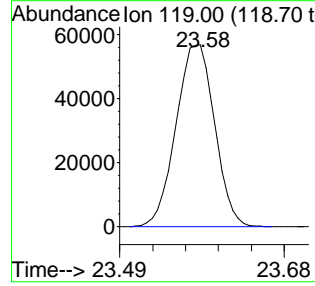
Q1

A 1449322



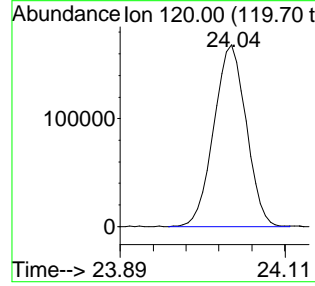
Q2

A 180019



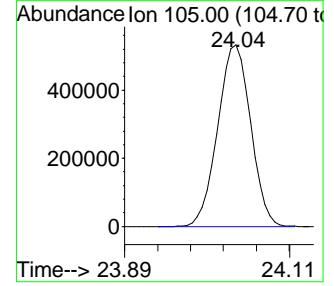
1-methyl-2-ethyl

A 497581 Q 97



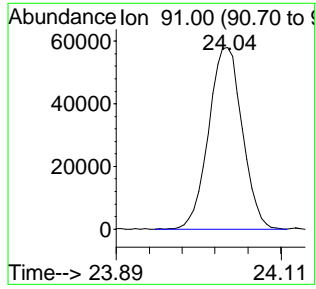
Q1

A 1599665



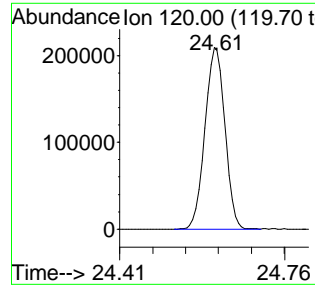
Q2

A 178178



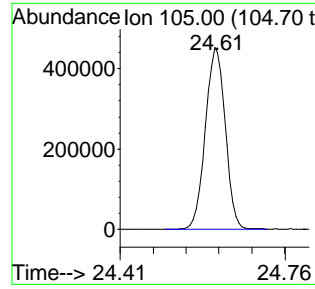
1,2,4-trimethylb

A 606242 Q 91



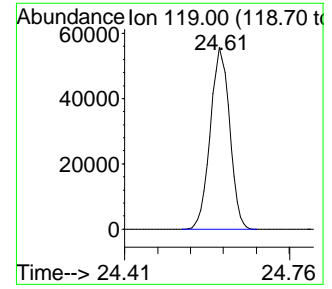
Q1

A 1305227



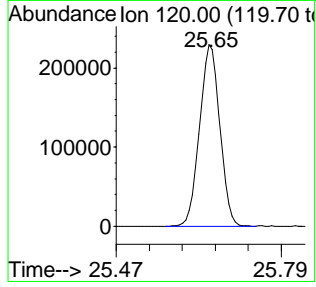
Q2

A 156505



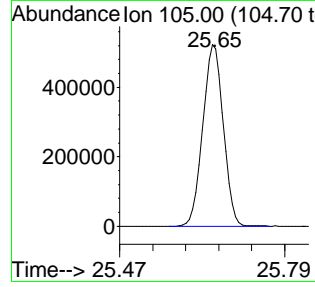
1,2,3-trimethylb

A 619724 Q 82



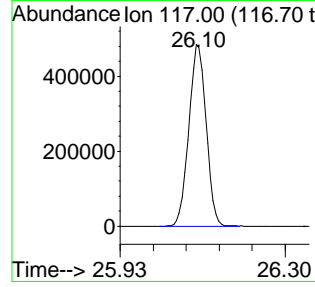
Q1

A 1432092



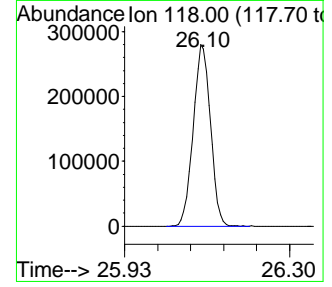
indan

A 1312982 Q 99



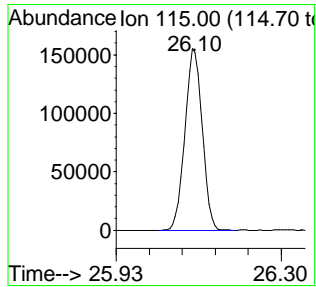
Q1

A 756010



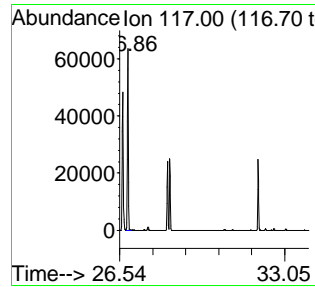
Q2

A 421084



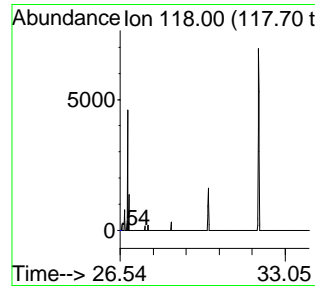
alkyl indans

A 164269 Q100



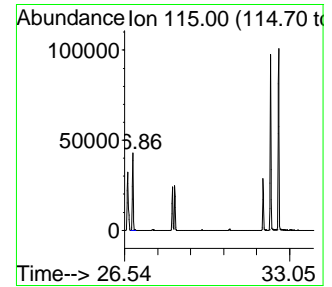
Q1

A 0



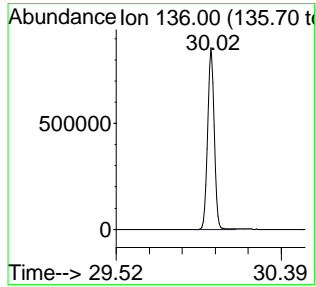
Q2

A 107972



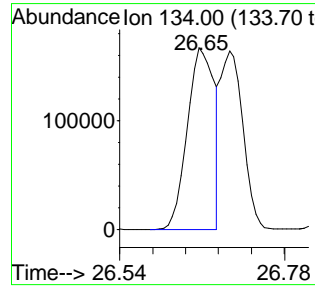
naphthalene-d8

A 2107652 Qn/a



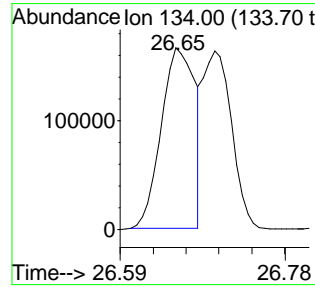
1,4-diethylbenze

A 455138 Qn/a



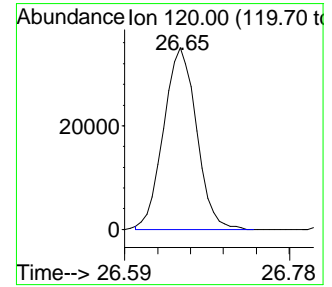
n-butylbenzene

A 449035 Q 21



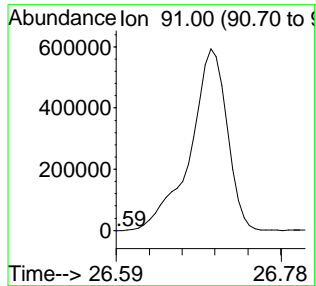
Q1

A 92089



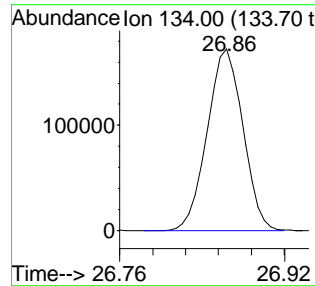
Q2

A 0



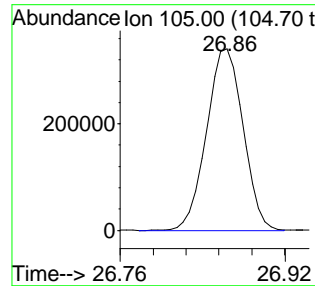
1,2-diethylbenze

A 432137 Q 99



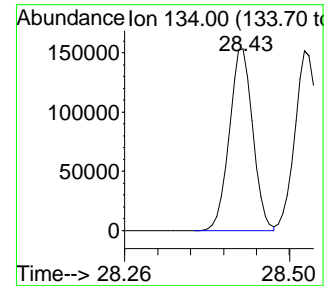
Q1

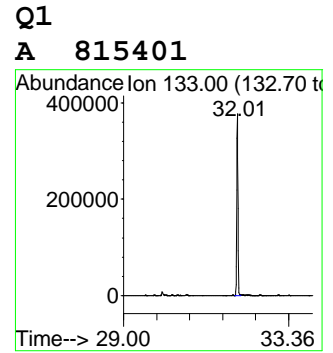
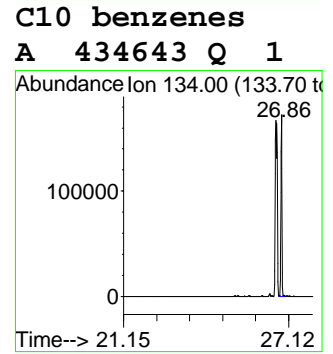
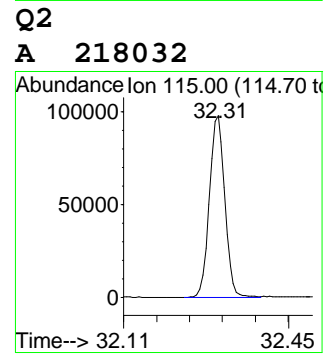
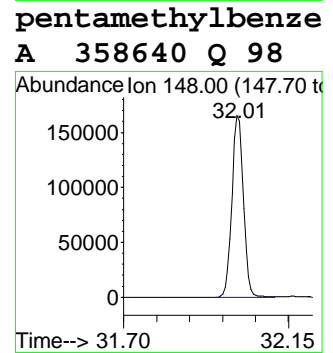
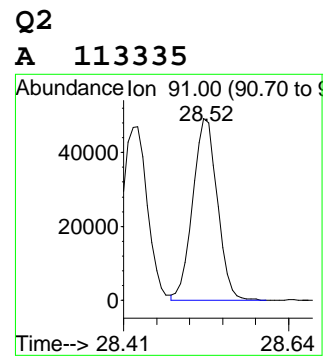
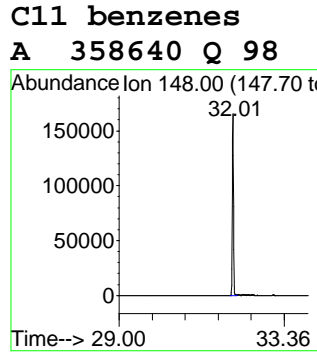
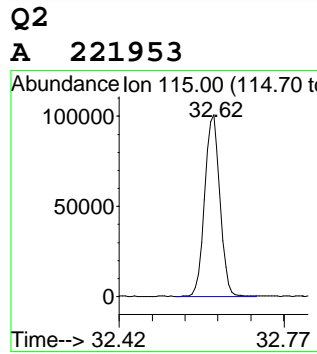
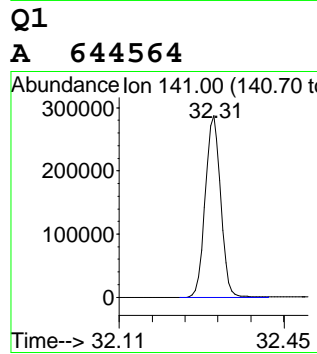
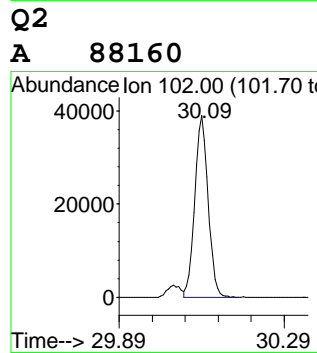
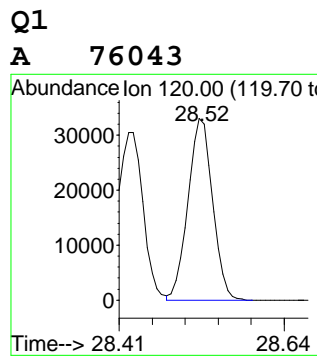
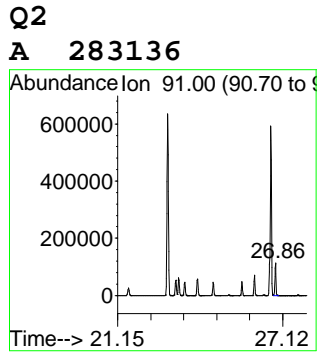
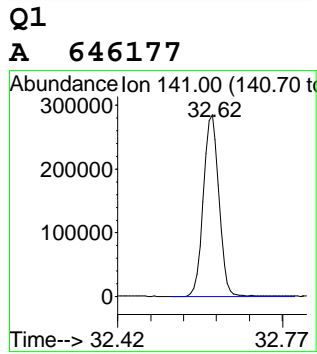
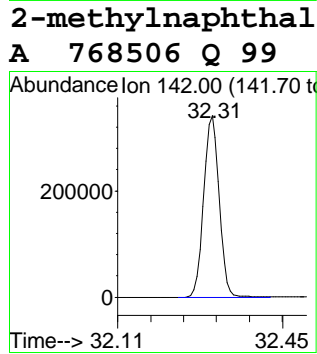
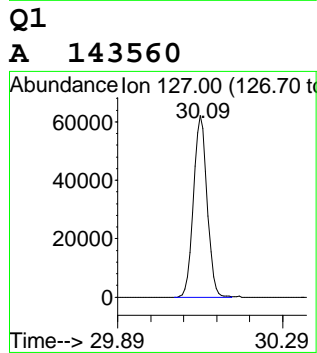
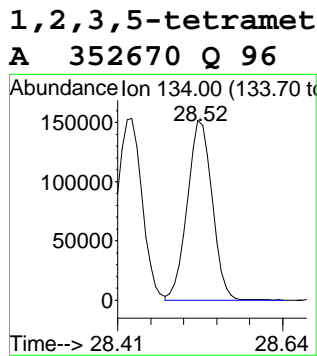
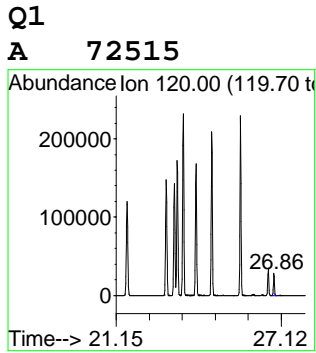
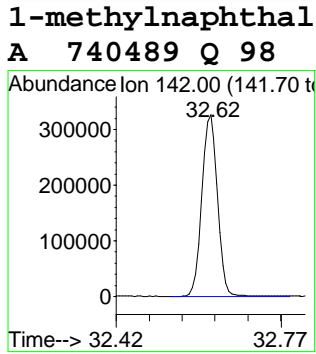
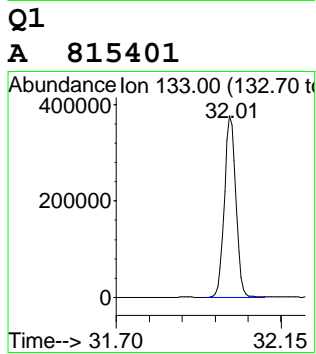
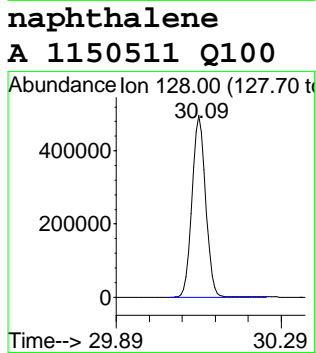
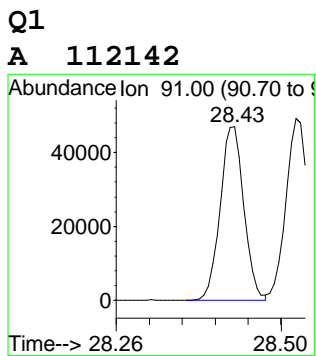
A 877241



1,2,4,5-tetramet

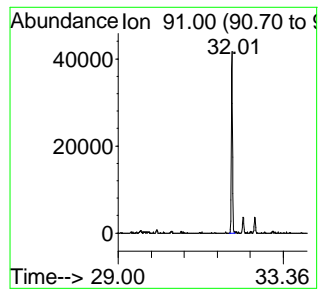
A 362664 Q 98





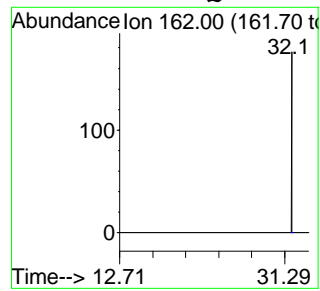
Q2

A 88934



C12 benzenes

A 67 Q100



Q1

A 0

