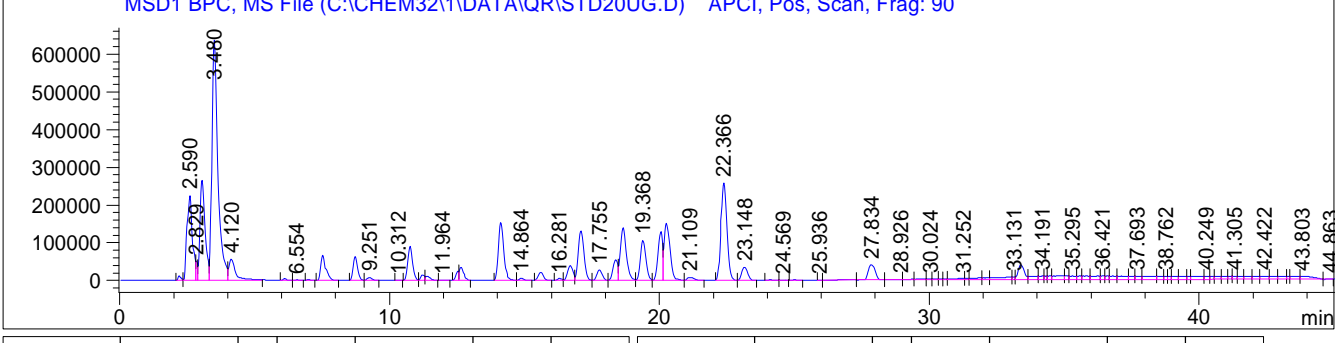
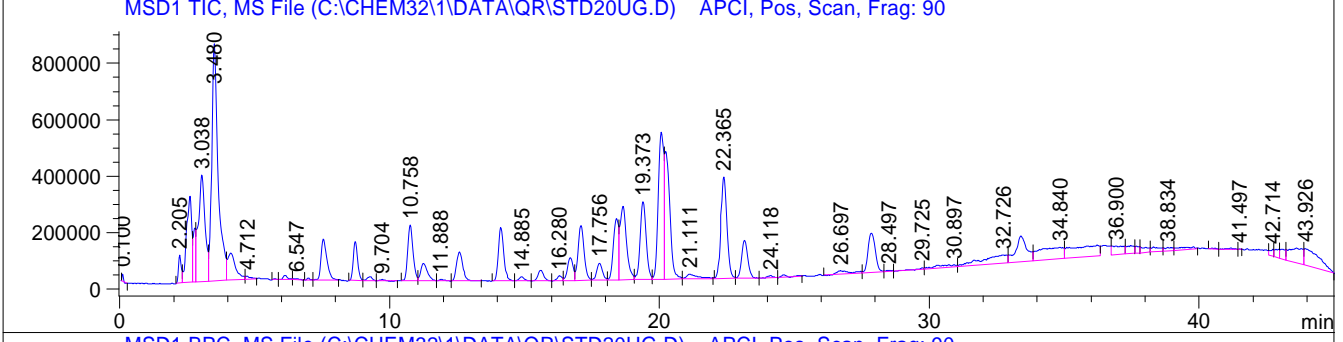
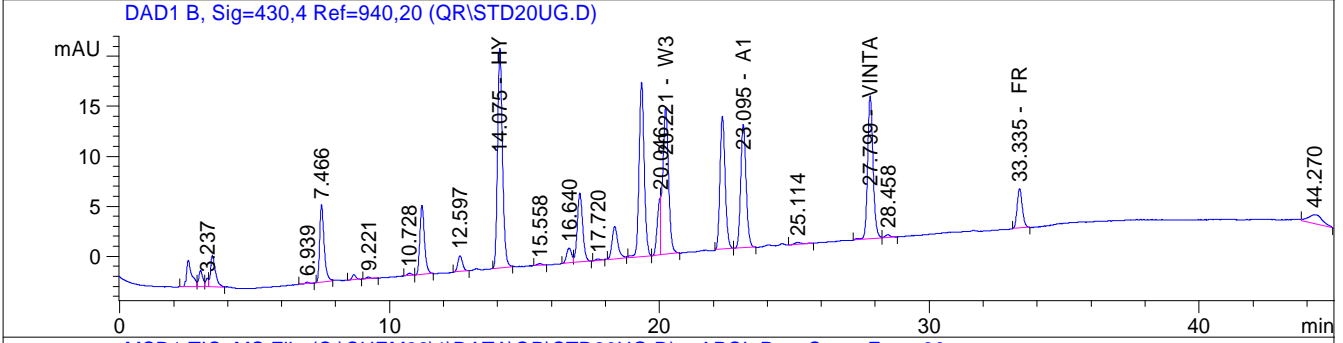
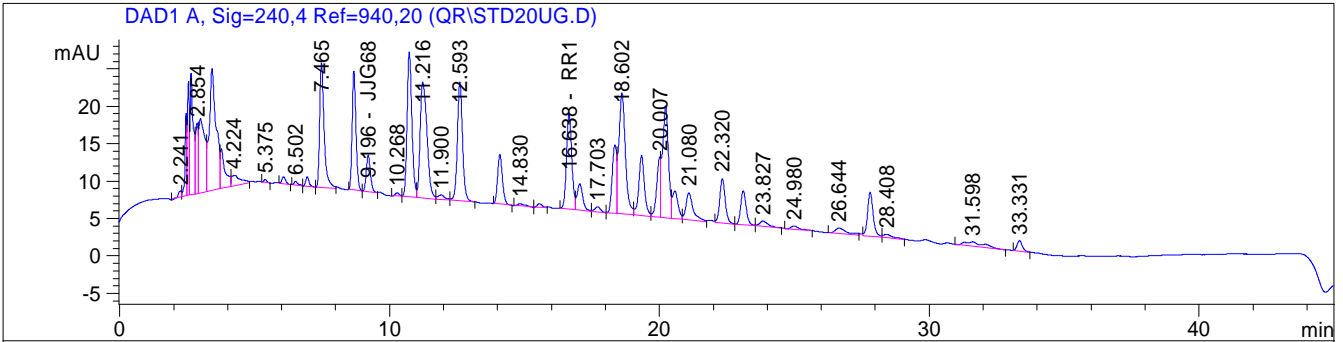


Acquisition Thu Oct 27 02:36:44 2005 lc_ms_2 POFARB8.M Ap
 Analysis Wed Dec 21 20:04:44 2005 Instrument 1 QR.M

SeqLine	Position	Injection	Barcode	Volume	Dilution	Multiplier	Amount
5	Vial 4	1		1	1	1	0



Compound	Signal	FI	Amt	Area	RT	ExpRT	Compound	Signal	FI	Amt	Area	RT	ExpRT
QWA011	DAD1 A		19.6	157	8.67	8.67	KKAA	DAD1 B		19.1	49.7	18.33	18.33
QWA011	MSD1 269		20.1	775854	8.71	8.71	KKAA	MSD1 291		20.5	871649	18.37	18.37
JYG68	DAD1 A		19.7	54.7	9.20	9.20	KKAA	MSD1 603		20.0	613178	18.40	18.40
JYG68	MSD1 359		20.2	123696	9.25	9.25	OLIE	DAD1 B		19.6	231	19.33	19.33
DORO	DAD1 A		19.9	240	10.72	10.72	OLIE	MSD1 375		20.1	1564169	19.37	19.37
DORO	MSD1 297		20.1	1189118	10.76	10.76	OLIE	MSD1 397		20.1	1052190	19.38	19.38
DNF8	DAD1 B		19.9	82.1	11.19	11.19	W3	DAD1 B		19.8	214	20.22	20.22
DNF8	MSD1 276		20.1	196467	11.22	11.22	W3	MSD1 270		20.1	2510825	20.25	20.25
HY	DAD1 B		19.8	279	14.07	14.07	TT5	DAD1 C		19.8	372	22.32	22.32
HY	MSD1 243		20.1	2194624	14.12	14.12	TT5	MSD1 315		20.1	3978573	22.37	22.37
ZX15	DAD1 D		19.7	70.8	15.55	15.55	A1	DAD1 B		19.7	173	23.10	23.10
ZX15	MSD1 366		20.0	327331	15.60	15.60	A1	MSD1 433		20.1	588059	23.15	23.15
RR1	DAD1 A		19.8	177	16.64	16.64	A1	MSD1 435		20.0	582450	23.14	23.14
RR1	MSD1 238		20.0	629929	16.68	16.68	VINTA	DAD1 B		20.0	200	27.80	27.80
AS001	DAD1 C		19.8	207	17.04	17.04	VINTA	MSD1 392		20.6	808005	27.83	27.83
AS001	MSD1 345		20.0	2034510	17.08	17.08	VINTA	MSD1 394			518760	27.84	27.84
LJ	DAD1 D		19.7	83.3	17.71	17.71	FR	DAD1 B		19.7	53.3	33.33	33.33
LJ	MSD1 336		20.1	425474	17.76	17.76	FR	MSD1 319		20.1	731433	33.37	33.37

